

2007 REVIEW OF THE
REGIONAL CONSERVATION PLAN

Prepared for the Trust Fund Board
April 3, 2007

TABLE OF CONTENTS

TABLE OF CONTENTS	2
Background	3
1.0 Current Status as of March 2007	4
1.1 Current Status of Protected Areas	4
1.2 Current Status of Ecosystems Protection.....	5
1.3 Known Ecosystem Loss and Ecosystem Threats	8
2.0. Accomplishments and future objectives	11
2.1 Partnerships	11
2.2 Voluntary Conservation	12
2.3 Local Trust Committee/Island Municipality Initiatives.....	12
2.4 Trust Council Initiatives	13
2.4.1 Natural Area Tax Exemption Program (NAPTEP).....	13
2.4.2 Free Crown Grants	13
2.5 Stewardship Education.....	14
3.0 Summary of Work Program Items	15
4.0 Evaluation of the Management of ITF properties.....	20
4.1 Management Plans	20
4.1.1 Extra Property Management Tasks	20
4.2 Management Groups.....	20
4.3 Covenants on TFB Lands.....	20
4.4 Monitoring of TFB Owned Lands.....	20
4.5 Covenant Breaches.....	20
5.0 Barriers to Success in 2007/2008	20
5.1 Staff Resources.....	20
5.2 Property Management.....	20
5.3 Funding for the Islands Trust Fund	20
Appendix I:	
Property Management Action Items Tracking List–TFB Owned Properties.....	20

BACKGROUND

According to the adaptive management process recommended within the Regional Conservation Plan (RCP), at the beginning of every fiscal year the Islands Trust Fund Board will evaluate all aspects of the Plan. This evaluation involves taking six steps, the outcome of which will direct the Islands Trust Fund's work program for the following year:

Step 1: Gather and Assess Data – The first step in adaptive management is to recognize that the islands are constantly changing dynamic systems. As indicated in Section 2.5, the Islands Trust Fund will update the Islands Trust Ecosystem Maps by 2009. However, until then, the Islands Trust Fund will continue on an annual basis to gather the following new information and adjust its goals and objectives accordingly:

- current status of protected areas
- known loss of natural ecosystems
- known threats and opportunities
- evaluation of the management of owned Islands Trust Fund Board lands
- evaluation of the effectiveness of the tools used to achieve the objectives outlined in this document (*done in 2005, NAPTEP evaluated in 2006, but no other components this year*)

Step 2: Revise Measurable Goals – The statistics originally presented in this plan will be revised as staff update the Islands Trust Ecosystem Maps with new air photos and as our partners inform us of their successes in protecting land in the Islands Trust Area. The goals in the previous year's plan may require adjustment accordingly.

Step 3: Implement the Plan – Based on the new data, statistics and goals, in some circumstances it may be necessary to implement the Regional Conservation Plan in a different way than originally envisioned. In each case, clear rationale should be available to support the change.

Step 4: Monitor – This annual review provides the framework for annual monitoring of the Trust Fund Board's success at achieving the tasks within the previous year's work program.

Step 5: Evaluate – This annual review takes the information gathered in Step 4, and evaluates whether or not the tasks were successful, and if not, what were the barriers to success, as well as suggesting solutions to these problems.

Step 6: Adjust – Staff take the information gained through the preceding five steps to the Trust Fund Board in the form of this annual review, and the Board debates the changing goals and barriers and approves a work program for staff for the following year.

The following report captures the six steps as described above.

1.0 CURRENT STATUS AS OF MARCH 2007

1.1 CURRENT STATUS OF PROTECTED AREAS

The RCP states the following as one of the five-year objectives:

To work with partners to achieve at least 15% protection of the total area of each local trust area and island municipality.

In 2006, the Islands Trust Fund conserved **106.19 hectares (ha)**—up from 762.86 ha in 2005—for a total protected area of 869.06 ha.

Table 1 indicates the increase in protected area, including the additional 106 hectares contributed by the ITF.

Local Trust Area/Island Municipality	% Protected 2005	% Protected 2006	% Increase Between 2005 to 2006	Name of the Property/Agency Who Contributed to Increase
Bowen	14.0%	14.1%	0.1%	ITF David Otter Nature Reserve – 3.04 ha
Denman	6.1%	10%	3.9%	Denman Conservancy Association – 194.8 ha
Gabriola	8.3%	8.3%	0%	
Galiano	14.0%	17.6%	3.6%	ITF Barrineau NAPTEP covenant 1.76 ha Addition to Bodega Ridge Addition to Matthews Point Regional Park Heritage Forest Covenants
Gambier	8.4%	10.6%	2.2%	Community Parks – Brigade Bay
Hornby	23.5%	23.5%	0%	
Lasqueti	9.1%	9.1%	0%	
Mayne	4.0%	4.34%	0.34%	Henderson Hill Park Dedication – 10.33 ha
North Pender	18.0%	18.1%	0.1%	ITF Little D'Arcy Island NAPTEP Covenant – 8.15 ha
Saturna	44.0%	44.0%	0%	
South Pender	32.3%	32.3%	0%	
Salt Spring	16.4%	18.6%	2.2%	New information on Salt Spring Island Waterworks lands
Thetis	4.0%	4.0%	0%	

Table 1: Change in Percent of Protected Area from 2005 to 2006

Significant gains were achieved this year in the Denman, Galiano, Gambier and Salt Spring local trust areas. Those trust areas with the lowest protected area are Thetis and Mayne. In order to work towards seeing more lands protected in these local trust areas, the following initiatives will be taken in 2007/08.

2007/2008 Action Items to Increase Protected Areas to 15%

Mayne

- Assist Mayne Island Conservancy in hosting a “Green Legacies Workshop”
- Complete Sensitive Ecosystem Mapping and host workshop on sensitive ecosystems
- Help the Mayne Island Conservancy develop an education and outreach program to target owners of ecologically significant land by providing fundraising, mapping, and communications support.

Thetis

- Partner with the Local Trust Committee to host a conservation day/information session
- Pending Trust Council’s approval, assist with the expansion of NAPTEP to the Cowichan Valley Regional District.

1.2 CURRENT STATUS OF ECOSYSTEMS PROTECTION

The RCP states the following as one of the five-year objectives:

To protect at least 5% of each natural ecosystem class within each local trust area and island municipality.

Table 2 indicates the change in the percentage of those ecosystem classes with the least protection (less than 5%).

Local Trust Area/ Island Municipality	Natural Ecosystem Class	% Protected (as of 2005)	% Protected (as of 2006)	Increase from 2005 to Dec 2006
Bowen	Cliffs	1	1	0
	Freshwater	2.3	2.3	0
	Herbaceous	0	0	0
	Shoreline	0	0	0
	Older Forest	0	0	0
	Woodland	0	0	0
	Riparian	0	0	0
Gabriola	Herbaceous	2.4	2.4	0
	Woodland	1.2	1.4	0.2
	Wetland	1.73	1.73	0
Lasqueti	Cliffs	0	0	0

Local Trust Area/ Island Municipality	Natural Ecosystem Class	% Protected (as of 2005)	% Protected (as of 2006)	Increase from 2005 to Dec 2006
	Freshwater	0	0	0
	Riparian	0	0	0
	Shoreline	2.59	0	0
	Wetland	1.03	0	0
Denman	Freshwater	0	0	0
	Wetland	3	12	9
	Woodland	0	0	0
Hornby	Freshwater	0	0	0
	Riparian	0	0	0
Gambier	Freshwater	0	0	0
	Herbaceous	0.44	0.44	0
	Wetland	0	0	0
	Riparian	0	0	0
	Woodland	0	0	0
	Cliffs	4	6	2
	Older Forest	0	0	0
	Shoreline	0	0	0
Thetis	Freshwater	0	0	0
	Riparian	0	0	0
	Shoreline	0.05	0	0
	Woodland	4.02	0	0
Salt Spring	Freshwater	0.31	0.31	0
Galiano	All classes exceed 5% protection			
Mayne	Herbaceous	2.79		0
	Freshwater			0
	Riparian	0	0	0
	Wetland	0		0
North Pender	Cliffs	0	0	0
South Pender	All classes exceed 5% protection			
Saturna	Riparian	0	0	0

Table 2: Change in Natural Ecosystem Classes with Less Than 5% Protection from 2005 to 2006

The only significant gain in protecting under-represented natural ecosystems was wetlands on Denman Island which saw an increase from 3% protected to 12% protected.

Three ecosystem classes are consistently under-protected on most islands: Riparian, Freshwater and Shoreline. Part of the reason why these are not protected is due to lack of good mapping for riparian ecosystems and other agencies' control over freshwater and shorelines.

RIPARIAN ECOSYSTEMS

Riparian Ecosystems are composed of specific vegetation found along creeks, streams, gullies, ponds and lakeshores. This ecosystem class is not identified well in ITEM because this type of the difficulty in identifying this ecosystem on an air photo. On March 31, 2006 the Provincial government enacted the Riparian Areas Regulation (RAR) which requires local governments to protect riparian areas from the impacts of residential, commercial and industrial development. Riparian areas under this regulation include only those riparian areas that are adjacent to a stream that provides fish habitat, however it is not well known where these streams exist in the Trust Area. In response to this information, Trust Council, in December 2005 recommended that Local Trust Committees amend their Land Use Bylaw to include a 30-metre setback from all streams and a provision for a 30-metre wide landscape strip.

RAR only protects streams that have fish habitat or potential fish habitat. RAR is also not applicable in the Agricultural Land Reserve. This means that RAR is not sufficient to protect many riparian ecosystems. The Trust Fund Board should therefore still consider applications for covenants or acquisitions that include riparian ecosystems, especially if they are in the ALR or have been identified as not having fish habitat or potential fish habitat.

2007/2008 Action Items on Riparian Ecosystems

- ITF staff will continue working with planning staff to prioritize islands for stream mapping. Currently portions of North Pender have been completed and Mayne has been completed.
- ITF staff will assist with the contract to map Salt Spring Island streams if Trust Council approves the budget to do so.

FRESHWATER ECOSYSTEMS

Freshwater Ecosystems are bodies of water such as lakes and ponds that usually lack floating vegetation. These ecosystems are held by a variety of different agencies including the regional districts and the Crown, such as Parks Canada's Greenburn Lake. There are also man-made lakes such as Magic Lake on North Pender Island, held by the Capital Regional District. Some lakes are privately held and have been protected such as Laughlin Lake on Galiano which is owned by the Galiano Conservancy Association and covenanted by the Trust Fund Board. Privately held lakes are ideal for protection by such tools as covenants or acquisitions.

2007/2008 Action Items on Freshwater Ecosystems

- Work with partners to locate all privately held lakes and develop a landowner contact program.

SHORELINE ECOSYSTEMS

Shoreline Ecosystems are those areas that link the marine and terrestrial environments and generally consist of mudflats and beaches. Most of this area is below the high water mark and is therefore under the Province's jurisdiction. However, most of the area above the shoreline on most islands has been or is currently being developed. Development affects the health of important habitat such as mudflats and beaches. Parks Canada has developed shoreline mapping for those island within the Gulf Islands National Park, but this information needs to be interpreted to identify areas that are sensitive or at risk.

2007/2008 Action Items on Shoreline Ecosystems

- Determine shoreline ecosystems at particular risk and partner with Living By Water (www.livingbywater.ca) to deliver a shoreline residents workshop in partnership with a local conservancy.
- Work with Parks Canada to determine shoreline ecosystems at risk for those islands within the Parks Canada jurisdiction.
- Develop a strategy to identify shorelines at risk on those islands outside the Parks Canada jurisdiction.

1.3 KNOWN ECOSYSTEM LOSS AND ECOSYSTEM THREATS

Part of the annual review of the RCP includes identifying where natural ecosystems are being lost and what is threatening the health of natural ecosystems.

According to The International Union for the Conservation of Nature and Natural Resources (IUCN or World Conservation Union), the two greatest threats to biodiversity are habitat loss and invasive alien species.

ECOSYSTEM LOSS

On a world scale the largest losses occurring to ecosystems and the habitats they support, are due to the continuing loss of the world's forest. Forests are continually being eradicated for timber, agriculture (in particular cattle grazing) and development. While forest loss from logging continues to be a threat to some of the natural ecosystems in the Trust Area, loss due to development continues to be a concern.

In 2006, the Islands Trust began to look at build out scenarios for several islands. Figure 1, depicts the build out potential for the southern portion Salt Spring Island. The dots on the map show the building potential for each lot based on current zoning. Important to note are the number of dots on the south-west portion of the island as this is where most of the sensitive ecosystems on Salt Spring Island are found.

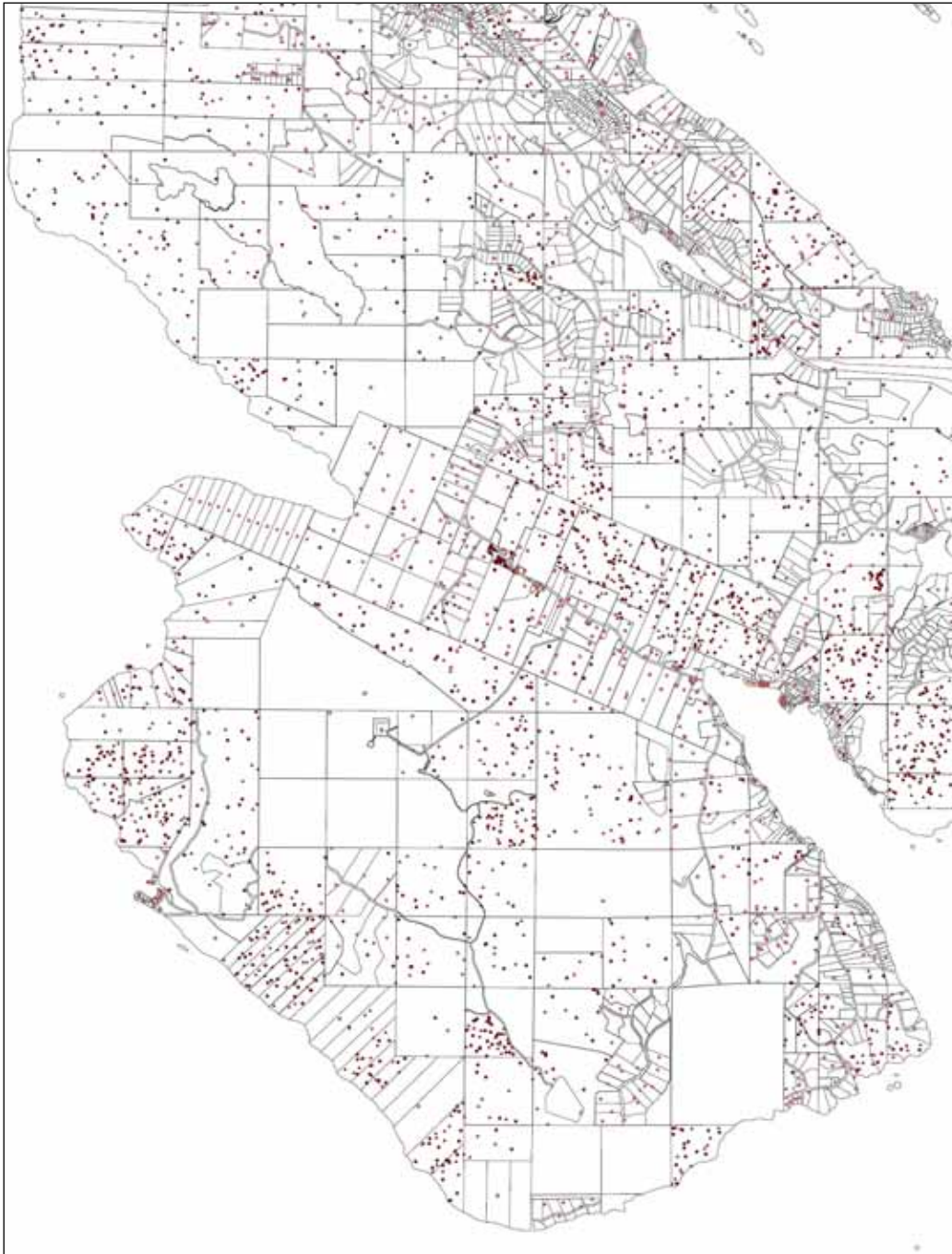


Figure 1: Southern portion of Salt Spring Island with building potential

2007/2008 Action Items on Ecosystem Loss

- In late 2006, the ITF received a \$5,000 grant from the Victoria Foundation for landowner contact activities on Salt Spring Island with a focus on sensitive ecosystems. In the summer of 2007, this money will be used in partnership with the SSI Conservancy to deliver a landowner contact program with a focus on those landowners who have both development potential and sensitive ecosystem/s on their property. An evaluation of the program after its conclusion will determine its applicability to other local trust areas/island municipalities.
- Work with planning staff to develop DPA guidelines for sensitive ecosystems.

ECOSYSTEM THREATS

In February 2007, Communication and Fundraising Specialist Clare Frater attended the Coastal Invasive Plant Committee Meeting (<http://coastalinvasiveplants.com>). At that meeting the following observations about the Coastal Douglas-fir biogeoclimatic zone were shared:

1. there has been a 14% growth in invasive species
2. invasive species are doubling every five years
3. Invasive species are the 2nd largest threat to biological diversity
4. 'Early detection, rapid response' is best approach to managing invasive plants. Once an invasive species is established, it will take 3-5 years of persistent effort to remove an invasive species from a site
5. Sheep are key vectors for spreading invasive plants.

There is a new aggressive marine invasive known as *Spartina* that is expanding its current range north from Puget Sound and Boundary Bay. It has already been found on Denman Island and at Fanny Bay. It has potential to completely alter mud-flat ecosystems and turn them into 'Spartina meadows', displacing invertebrates, eelgrass, native marsh vegetation and can change the elevation of the marsh area potentially leading to flooding. This is already happening in Puget Sound. While its presence below the high tide mark means it will not likely affect our properties, this is a species that the public might need to be educated to watch for.

The Islands Trust Fund currently holds nine conservation covenants on Sidney Island. These covenants are being degraded by the explosive population of fallow deer. There is a high degree of urgency in seeing these fallow deer eliminated. In 2005, the number of lots on this island increased to 111. There are currently only two full time residents on the island but this number is likely to increase dramatically in the future. With an increase in population, it becomes much more difficult to carry out an eradication program. ITF staff met with many of the landowners in June 2006 to discuss the problem. As a result of this meeting, many of the landowners in the Strata currently support the deer removal but this could change suddenly with a new Strata Council and new lot owners moving to the island.

2007/2008 Action Items on Ecosystem Threats

- Build monitoring for invasive species and ecological integrity on TFB owned and covenanted lands into ITF's annual monitoring program.
- Support *Spartina* education efforts in the Islands Trust Area
- Assist the Sallas Strata Corporation Sidney Island with a funding proposal to the federally funded Invasive Alien Species Program for deer removal on this island and assist with education activities about deer eradication/control.

2.0. ACCOMPLISHMENTS AND FUTURE OBJECTIVES

The ITF has a number of tools to achieve the five-year objectives outlined in the RCP. The following is list of those tools and the accomplishments for 2006/07 and future objectives in 2007/08.

2.1 PARTNERSHIPS

2006/2007 Action Items on Partnerships

1. In partnership with Parks Canada completed sensitive ecosystem mapping for North Pender Island
2. Assisted Lasqueti in forming a Conservancy group
3. Partnered on fundraising with the Gambier Conservancy
4. Promoted the Opportunity Fund to partners
5. Chaired Garry Oak Ecosystem Recovery Team's Conservation, Planning & Site Protection Action Group until November 2006
6. Participated in the new Coastal Invasive Plant Committee
7. Strengthened partnerships at the Land Trust Alliance Seminar Series in March 2007
8. Purchased memberships in most local conservancies
9. Explored transfers of property to and from suitable partners which resulted in major revisions to the Property Disposal Policy

2007/2008 Action Items on Partnerships

1. Assist Thetis in forming a conservancy group
2. Partner with the Ministry of Environment on a conservation covenant for a priority Garry Oak site on Hornby Island
3. Partner with the Ministry of Agriculture and Lands to fundraise for the acquisition of an important property on Lasqueti Island
4. In partnership with Parks Canada complete sensitive ecosystem mapping for Mayne Island
5. In partnership with the Province complete sensitive ecosystem mapping of SSI
6. In partnership with the Province, complete Terrestrial Ecosystem Mapping on Gabriola, Thetis, Lasqueti, Hornby and Denman. Translation of this information into sensitive ecosystem maps to be completed in 2008/09
7. Strengthen partnerships by attending the Land Trust Alliance Seminar Series in March 2008

2.2 VOLUNTARY CONSERVATION

2006/2007 Action Items on Voluntary Conservation

In 2006, the Trust Fund Board achieved two acquisitions and three covenants for an additional 106 hectares protected.

Local Trust Area/ Island Municipality	Property	Area Protected (ha)
Salt Spring	Vogt Covenant	29.739
Gabriola	UREP Nature Reserve, Gabriola	63.5
North Pender	Little D'Arcy NAPTEP Covenant	8.154
Galiano	Barrineau NAPTEP Covenant	1.76
Bowen	David Otter Nature Reserve	3.04

2007/2008 Action Items on Voluntary Conservation

1. Covenants and acquisitions that will be completed during 2007/08 will be largely dependent on new opportunities and how quickly ongoing projects can be concluded (current projections include 3 acquisitions and 3 covenants).
2. Promote the use of section 99 (1h) of the Land Title Act.

2.3 LOCAL TRUST COMMITTEE/ISLAND MUNICIPALITY INITIATIVES

2006/2007 Action Items with Local Trust Committees/Island Municipalities

1. Developed an algorithm to generate optimal Protected Area Networks in each LTA.
2. Developed Sensitive Ecosystem Mapping for North Pender
3. Contracted TEM Mapping for SSI, Gabriola, Thetis, Lasqueti, Hornby and Denman
4. Contracted Riparian Area mapping for Mayne Island.
5. Attended two meetings of Thetis LTC meetings regarding conservation
6. Attended 4 North Pender LTC meetings and two Mayne LTC meeting regarding OCPs
7. Met twice with staff and advisory groups re: SSI OCP
8. Produced for North Pender a slideshow on Sensitive Ecosystems for the local cable TV channel called "Who Lives Here"
9. Attended Stewardship Days on North Pender

2007/2008 Action Items with Local Trust Committees / Island Municipalities

1. Develop Sensitive Ecosystem Mapping for Mayne and SSI
2. Contract Riparian Area Mapping for SSI
3. Work with LTCs to ensure they are aware of all Garry oak sites in their area
4. Contract flying new airphotos for Gabriola, Thetis, and Valdes
5. Coordinate landowner contact for groundtruthing of Gabriola, Thetis, Lasqueti, Hornby and Denman

6. Help Local Trust Committees identify sensitive ecosystems on Mayne and Salt Spring (who have OCP reviews underway), and on Thetis and Gambier associated islands (who will begin their OCP review process this year)
 - Research the green space plans of regional districts, parks and planning commissions. Compile this information and communicate it to local trustees, planning staff and conservancies to promote a collaborative approach to achieving a protected areas network for each island in the Trust Area.

2.4 TRUST COUNCIL INITIATIVES

2.4.1 NATURAL AREA TAX EXEMPTION PROGRAM (NAPTEP)

2006/2007 Action Items for NAPTEP

1. Sent 200 promotional letters to landowners in the CRD who owned 5-20 acres with an assessed land value of \$750,000 or greater.
2. Sent 100 letters to Gambier landowners with a minimum lot size of 10 hectares and an assessed land value of \$500,000 or greater.
3. Random interviews conducted of those landowners who received the informational letters to examine barriers.
4. Completed two NAPTEP covenants on North Pender (Little D'Arcy) and on Galiano (Barrineau).
5. Evaluated the NAPTEP program and made recommended changes
6. Informed partners of changes to the program
7. Sent out press releases and attended a SSI Conservancy outreach.

2007/2008 Action Items for NAPTEP

1. Evaluate consultant's idea of rebranding the NAPTEP program name
2. Create a NAPTEP communication plan for 2008
3. Work with LTCs on whether to expand the program to additional Regional Districts.
4. Pending Trust Council's approval, assist Local Trust Committees with attempts to expand NAPTEP to the Regional Districts of Nanaimo, Powell River, Comox-Strathcona, Cowichan Valley, and Greater Vancouver (Bowen)

2.4.2 FREE CROWN GRANTS

2006/2007 Actions Items on Free Crown Grants

1. Former UREP on Gabriola Island completed.
2. Received approval to survey Mt. Artaban, Gambier
3. Raised \$30,000 towards the survey and management of Mt. Artaban
4. Performed appraisal and submitted application for Fairy Fen, Bowen
5. Worked with Lasqueti to select a Crown Grant parcel

2007/2008 Action Items on Free Crown Grants

1. Complete survey on Mt. Artaban, Gambier

2. Keep tabs on application for Fairy Fen, Bowen Is.
3. Complete transfer agreement of Pebble Beach, Galiano Island
4. Submit application for parcel on Lasqueti Island
5. Work to get covenants on Denman (Beaver Pond) and Bowen (Lieben/Nielson)

2.5 STEWARDSHIP EDUCATION

2006/2007 Action Items on Stewardship Education

- Distributed the "Field Guide to Noxious Weeds and Other Selected Invasive Plants of British Columbia"
- Revised, updated and improved the Islands Trust Fund's website
- Attended stewardship day on North Pender Island

2007/2008 Action Items on Stewardship Education

- Communicate our progress (% protected area by local trust area / island municipality) through news release, E-news, web-page or other media.
- Write at least three information articles for local newsletters/newspapers describing ecosystems/ protection status/tools with special focus on the priority ecosystems in the region that the publication reaches.

3.0 SUMMARY OF WORK PROGRAM ITEMS

In the 2006 annual review of the RCP, the Trust Fund Board approved the following work program:

FIVE YEAR OBJECTIVES (2005-2010)	WORK PROGRAM 2006/07	STATUS
Protect at least 5% of each natural ecosystem class within each local trust area and island municipality	Conclude acquisition project on Bowen	COMPLETE
	Work to have Bowen Crown Land parcel (Lieben/Nielson) transferred / covenanted to TFB	IN PROGRESS
	Promote NAPTEP through 200 informational letters	COMPLETE
	Evaluate NAPTEP for barriers	COMPLETE
Protect at least two parcels of land of at least 50 ha within the Bowen Island Municipality, Gambier or Lasqueti Local Trust Area	Complete Gambier Mount Artaban Crown Grant	IN PROGRESS
	Submit Application for Bowen Municipality Free Crown Grant	COMPLETE
	Fundraise \$30,000 for Mount Artaban acquisition	COMPLETE
	Assist Lasqueti in forming a Conservancy group	COMPLETE
Protect at least one of the Garry oak ecosystem sites identified by the Garry Oak Ecosystem Recovery Team (GOERT)	North Pender Garry oak site "Oak Bluffs" will achieve a degree of protection through a development permit area once the OCP is finalized in June	IN PROGRESS
	Work with other LTCs to ensure all identified Garry oak sites are in a DP area	IN PROGRESS
	Conclude NAPTEP covenant on Little D'Arcy island where a number of red listed species have been identified	COMPLETE
	Distribute Field Guide to Noxious Weeds	COMPLETE
	Continue to update website with rainwater education materials	COMPLETE
To work with partners to achieve at least 15% protection of the total area of each local trust area and island municipality, including modified ecosystems on islands with few natural areas	Mayne – pilot program to include network of protected areas in OCP	IN PROGRESS
	Thetis – Work with trustees on identifying potential areas for protection. Work to establish a conservancy group on this island	IN PROGRESS
	Denman - work with LTC and developer who currently owns almost 1/3 of Denman Island	IN PROGRESS
	Denman- work to have Crown Land parcel (Beaver Pond) covenanted or transferred to TFB	IN PROGRESS
To protect at least four properties adjacent to protected areas	Draft Landowner Contact program to include landowners adjacent to already protected areas	IN PROGRESS
	Advertise to partners the potential of the Opportunity Fund	COMPLETE

FIVE YEAR OBJECTIVES (2005-2010)	WORK PROGRAM 2006/07	STATUS
	Promote the use of section 99 of the Land Title Act	COMPLETE
To see protected area networks delineated in all OCPs across the Islands Trust Area. The first step in achieving this target is preparing set of guidelines for approval by Trust Council	Establish an algorithm that can identify a PAN in each LTC	COMPLETE
	Work with Mayne LTC to establish wording for OCP	IN PROGRESS
	Draft guidelines for adoption by Trust Council	IN PROGRESS
To update the ITEM and increase accuracy by groundtruthing at least 20% of polygons and to provide information to all partners each year on protected status for each local trust area/island municipality	Complete updated ITEM mapping for North Pender, South Pender, Saturna and Mayne	COMPLETE
	Draft contract for updating ITEM on SSI in preparation for SSI OCP	COMPLETE
	Build in annual updates of protected status in other jurisdictions, by other agencies	COMPLETE

EVALUATION OF 2006/2007 WORK PROGRAM

Of the 26 items to be completed in 2006/07, eleven are in progress. Most of those eleven items were delayed due to a number of factors outside the ITF staff's control. For example, negotiations with the Ministry of Agriculture and Lands over the Crown land projects have taken much longer than expected. The work program items to do with a protected areas network (PAN), even though PANs are part of Trust Council's policy statement, were overly ambitious. Due to the detailed work required at the Local Trust Committee / Island Municipality level, the development of a PAN will be a much slower process than first anticipated. The "in progress" items have been added to the work program for 2007/08.

SUMMARY OF WORK PROGRAM 2007/08

LONG TERM GOALS	FIVE YEAR OBJECTIVES (2005-2010)	WORK PROGRAM 2007/08
<p>Protect a significant amount of each natural ecosystem in each local trust area and island municipality</p>	<p>Protect at least 5% of each natural ecosystem class within each local trust area and island municipality</p>	<p>Complete Sensitive Ecosystem Mapping and host workshop on sensitive ecosystems</p>
		<p>ITF staff will continue working with planning staff to prioritize islands for stream mapping</p>
		<p>Currently portions of North Pender have been completed and Mayne has completed</p>
		<p>ITF staff to contract mapping of Salt Spring Island streams if the budget to do so is approved by Trust Council</p>
		<p>Work with partners to locate all privately held lakes and develop a landowner contact program.</p>
		<p>Determine shoreline ecosystems at particular risk and partner with Living By Water (www.livingbywater.ca) to deliver a shoreline residents workshop in partnership with a local conservancy</p>
		<p>Work with Parks Canada to determine shoreline ecosystems at risk for those islands within the Parks Canada jurisdiction</p>
		<p>Develop a strategy to identify shorelines at risk on those islands outside the Parks Canada jurisdiction</p>
		<p>Assist Thetis in forming a conservancy group</p>
		<p>Evaluate rebranding of NAPTEP name</p>
		<p>Create a NAPTEP communication plan for 2008</p>
		<p>Protect the last remaining blocks of large natural ecosystems</p>
<p>Partner with the Ministry of Agriculture and Lands to fundraise for the acquisition of an important property on Lasqueti Island</p>		
<p>Submit Crown Grant application for parcel on Lasqueti Island</p>		

LONG TERM GOALS	FIVE YEAR OBJECTIVES (2005-2010)	WORK PROGRAM 2007/08
<p>Protect nationally and provincially identified ecosystems and habitats of species that are considered endangered, threatened or of special concern</p>	<p>To protect at least one of the Garry oak ecosystem sites identified by the Garry oak Ecosystem Recovery Team (GOERT)</p>	<p>Complete Gambier Mount Artaban Crown Grant</p> <p>Partner with the SSI Conservancy to deliver a landowner contact program with a focus on those landowners who have development potential AND sensitive ecosystem/s on their property Evaluate the program and determine applicability to other local trust areas/island municipalities in the future</p> <p>Work with planning staff to develop DPA guidelines for sensitive ecosystems</p> <p>Build monitoring for invasive species and ecological integrity in TFB owned and covenanted lands into ITF's annual monitoring program</p> <p>Support Spartina education efforts in the Islands Trust Area</p> <p>Assist the Sallas Strata Corporation Sidney Island with a funding proposal to the Federally funded Invasive Alien Species Program for deer removal on this island</p> <p>Partner with the Ministry of Environment on a conservation covenant for a priority Garry Oak site on Hornby Island</p> <p>Work with other LTCs to ensure all identified Garry oak sites are in a DP area</p>
<p>Ensure that each local trust area and island municipality has protected viable ecosystems</p>	<p>To work with partners to achieve at least 15% protection of the total area of each local trust area and island municipality, including modified ecosystems on islands with few natural areas</p>	<p>Communicate our progress (protected area % by local trust area/island municipality) through news release, E-news or other medium</p> <p>Assist Mayne Island Conservancy in hosting a "Green Legacies Workshop"</p> <p>Write at least three information articles for local newsletters/newspapers describing ecosystems/ protection status/tools with special focus on the priority ecosystems in the region that the publication reaches</p> <p>Help the Mayne Island Conservancy develop an education and outreach program to target owners of ecologically significant land by providing fundraising, mapping, and communications support</p> <p>Partner with the Local Trust Committee to host a conservation day/information session on Thetis</p>
<p>Expand existing protected areas for each island</p>	<p>To protect at least four properties adjacent to protected areas</p>	<p>Promote the use of section 99 (1h) of the <i>Land Title Act</i></p>

LONG TERM GOALS	FIVE YEAR OBJECTIVES (2005-2010)	WORK PROGRAM 2007/08
Create a network of protected area for each island	To see protected area networks delineated in all OCPs across the Islands Trust Area. The first step in achieving this target is preparing set of guidelines for approval by Trust Council	Research the green space plans of regional districts, parks and planning commissions, compile this information and communicate it to local trustees, planning staff and conservancies to promote a collaborative approach to achieving a protected areas network for each island in the Trust Area.
Improve the ITEM to form a stronger foundation for future plans	To update the ITEM and increase accuracy by groundtruthing at least 20% of polygons and to provide information to all partners each year on protected status for each local trust area/island municipality	<p>In partnership with the Province complete sensitive ecosystem mapping of SSI</p> <p>In partnership with Parks Canada complete sensitive ecosystem mapping for Mayne Island</p> <p>In partnership with the Province, complete Terrestrial Ecosystem Mapping on Gabriola, Thetis, Lasqueti, Hornby and Denman. Translation of this information into sensitive ecosystem maps to be completed in 2008/09</p> <p>Develop Sensitive Ecosystem Mapping for Mayne and SSI</p> <p>Contract Riparian Area Mapping for SSI</p> <p>Work with LTCs to ensure all identified Garry oak sites are identified</p> <p>Contract flying for new airphotos for Gabriola, Thetis, and Valdes.</p> <p>Coordinate landowner contact for groundtruthing of Gabriola, Thetis, Lasqueti, Hornby and Denman</p> <p>Work Mayne and Salt Spring Local Trust Committees who have OCP reviews underway, and with Thetis and Gambier associated islands Local Trust Committees who will begin their OCP review process this year to help identify sensitive ecosystems in these local trust areas.</p>
Ensure safety and ecological integrity of protected areas	To develop an implementation plan that ensures the safety and ecological integrity of all TFB owned and covenanted lands	<p>Develop guidelines for effective management plans</p> <p>Perform a risk assessment (human safety and ecological) of all TFB owned properties.</p> <p>Carry out highest priority tasks identified in the risk assessment and in the management plans</p> <p>Staff to prepare a discussion paper for the Board outlining the possibility of transferring properties that the Board acquires to other agencies</p> <p>From the monitoring recommendations in 2005 and 2006 create a list of priority action items</p> <p>Complete a covenant on the Ruby Alton Nature Reserve (RANR</p>

LONG TERM GOALS	FIVE YEAR OBJECTIVES (2005-2010)	WORK PROGRAM 2007/08
		<p>Develop a policy and procedures for breach investigations</p> <p>Attempt to find management groups for the six TFB owned properties currently lacking local leadership: Long Bay Wetland and Brigade Bay Bluffs (Gambier); Kweil and Mount Trematon (Lasqueti), Deep Ridge and Ruby Alton (SSI)</p>

4.0 EVALUATION OF THE MANAGEMENT OF ITF PROPERTIES

Although not included as specific targets in the Regional Conservation Plan, the adaptive management process in the plan recommends an evaluation of the management of TFB owned and covenanted lands. The Board's focus since inception has been primarily on acquisitions and covenants, but good stewardship of the land that has been entrusted to the Board is becoming equally important. This is the biggest challenge faced by this land trust and all others.

In keeping with the latest revisions to the Islands Trust's strategic plan, it is recommended that an additional goal and 5 year objective be added to the RCP: to ensure the safety and ecological integrity of the Trust Fund Board's protected areas. This objective is now added to the work plan table in Appendix 1.

4.1 MANAGEMENT PLANS

A summary of all the action items identified in each property's management plan can be found in Appendix 1. What is important to note is not particularly the details but the volume of work that is recommended for each property.

2006/2007 Action Items on Management Plans

- Management plans were completed for the following four nature reserves: former UREP (Gabriola), David Otter (Bowen), Morrison Marsh (Denman) and Mount Trematon (Lasqueti)

2007/2008 Action Items on Management Plans

1. Develop guidelines for more comprehensive and effective management plans, especially around risks to public safety and ecological integrity
2. Once survey is complete and property is transferred, contract management planning for Mt. Artaban (Gambier)

4.1.1 EXTRA PROPERTY MANAGEMENT TASKS

2006/2007 Action Items Extra Property Management Tasks Completed (not on original management plans)

Ruby Alton (Salt Spring)

- Purchased front-loading washer to conserve water
- Maintained rainwater system including replacing parts and cleaning roof and gutters (ordered several truck loads of rainwater during summer drought)
- Repaired significant damage to fencing and demolished the boathouse after a motor vehicle accident (no injuries)
- Removed a maple tree posing a hazard to the house
- Insulated the walls of the house and wrapped all the duct work as recommended by *EnerGuide for Houses*
- Painted bedrooms and kitchen, replaced glass on fireplace, hinges on oven door, taps on kitchen sink

- Hired exterminator to keep house rodent-free while vacant
- Cleaned chimneys
- Performed percolation testing on the soil and tendered bids to replace/repair the Alton House septic system (\$20,000-\$25,000 price tag is preventing progress on this task)

Trincomali (Galiano):

- Felled and thinned several danger trees at neighbour's request

Coats Millstone (Gabriola)

- Erected 7 signs to welcome people, warn of safety issues and indicate private property boundaries.
- Staff also held a public meeting to explore the transfer of this property to the Nanaimo Regional District.

2007/2008 Action Items

- Perform a risk assessment (human safety and ecological) of all TFB owned properties and incorporate recommendations into the appropriate management plans.
- Carry out highest priority tasks identified in the risk assessment and in the management plans
- Continue to explore the possibility of transferring properties that the Board acquires to other agencies
- Continue to explore with the executor of the Ruby Alton estate to have the right of entry removed and replaced by a covenant. Based on this outcome and legal advice, staff will present options to the Board on what can be done with this property.
- Current Ruby Alton house management tasks for 2007-2008 include:
 - find tenant / caretaker
 - upgrade septic system
 - replace doors and windows
 - replace flooring in bedrooms and possibly in living room
 - maintain creek intake and rainwater harvesting system
 - clean out old dump site

4.2 MANAGEMENT GROUPS

There is a trend towards increasing difficulty in engaging volunteer management groups.

2006/07 Action Items on Management Groups

- No new agreements have been reached with volunteer groups on the following sites: Long Bay Wetland and Brigade Bay Bluffs (Gambier); Kwel and Mount Trematon (Lasqueti), Deep Ridge and Ruby Alton (SSI).

2007/2008 Action Items on Management Groups

- Attempt to find management groups for the six TFB owned properties currently lacking local leadership: Long Bay Wetland and Brigade Bay Bluffs (Gambier); Kwel and Mount Trematon (Lasqueti).
- Update management plans where expectations on local management groups have been unrealistic

4.3 COVENANTS ON TFB LANDS

Outstanding conservation covenants on TFB lands include the following:

ITF COVENANTS OUTSTANDING	
Singing Woods, Bowen Island	Date acquired: Dec. 1999
Lindsay Dickson, Denman Island	Date acquired: Jun. 2001
Alton, Salt Spring Island	Date acquired: Feb. 2002
Horton Bayviary, Mayne Island	Date acquired Feb. 2002.
Cunningham, Salt Spring Island	Date acquired: Feb. 1994
Deep Ridge, Salt Spring Island	Date acquired: Dec. 1992
Long Bay Wetland, Gambier Island	Date acquired: Jan. 2005
Brigade Bay Bluffs, Gambier Island	Date acquired: Jan. 2005
Mount Trematon, Lasqueti Island	Date acquired: Dec. 2005

2006/2007 Action Items on Covenants

- Covenants were completed on the Morrison Marsh and David Otter Nature Reserves.

2007/2008 Action Items on Covenants

- Complete a covenant on the Ruby Alton Nature Reserve (RANR). A covenant on the RANR is the highest priority to complete due to the negotiation between the executor and the TFB.

4.4 MONITORING OF TFB OWNED LANDS

1. For the past three years, the Trust Fund Board receives an annual monitoring report and recommendation for the Boards approval. This list for the past two years is provided in Appendix 2. Some of these items on this list have yet to be addressed.

2006/2007 Action Items on Monitoring

- The monitoring contractor has entered into a five-year contract, giving us some certainty over costs and quality of work.

2007/2008 Action Items on Monitoring

- From the monitoring recommendations in 2005 and 2006 create a list of priority action items
- The monitoring contractor will attempt to sub-contract certain islands (e.g. to TLC and other local conservancies) as local capacity improves.

4.5 COVENANT BREACHES

2006/2007 Action Items on Covenant Breaches

- In 2006/07 two breaches were found on TFB covenanted properties. One was a serious breach and one was minor. Both are as yet unresolved. As ownership of covenanted lands changes and as development pressure grows, there is likely to be an increase breaches of TFB covenanted lands.

2007/2008 Action Items on Covenant Breaches

- Develop a policy and procedure for breach investigation and enforcement

5.0 BARRIERS TO SUCCESS IN 2007/2008

5.1 STAFF RESOURCES

The work program for 2007/2008 is an ambitious one, especially with the increased expectations of Local Trust Committees who wish to have NAPTEP expand to their areas, and with the increasing needs that local planning staff have for Trust Fund staff's expertise on a wide range of environmental topics. The Local Planning Services review, completed in March 2007, recognized this gap in the skill set of the Islands Trust planning department, but offered no immediate solutions to the problem, making 2007/2008 another difficult year of juggling multiple priorities.

POSSIBLE SOLUTIONS

Trust Fund staff may need to stop providing services to Local Planning whenever time exceeds the original 20% allocated to the Ecosystem Protection Specialist's position. The Trust Fund Board will also need to continue to manage its expectations on staff when considering adding tasks to the work program for 2007/2008.

5.2 PROPERTY MANAGEMENT

Property Management continues to be a challenge for the Islands Trust Fund. The ITF currently owns 18 properties across the Trust Area. In 2003 before the Regional Conservation Plan was approved, the Board approved a Strategic Plan for 2003-2007. In this plan it indicated that a property management specialist should be created as a program item in 2005 and a base item in 2006.

POSSIBLE SOLUTIONS

Budget submissions for 2008-2009 should include a half time position dedicated to property management. Staff recommend calling this position "Land Steward," after a similar position recently created by the Whatcom County Land Trust in Washington State. This position would incorporate several of the duties now performed by the Manager, the Ecosystem Protection Specialist and the monitoring contractor.

5.3 FUNDING FOR THE ISLANDS TRUST FUND

At the first Board meeting of 2007, outgoing Trust Fund Board Chair David Borrowman returned to the agenda the question of long term funding for the Board's operational needs. Kim Benson, Islands Trust Chair (and former member of the Trust Fund Board), attended this meeting and confirmed the need to reduce the Trust Fund Board's dependency on the Trust Area taxpayers in the future. The Board instructed staff to develop a strategy for long term funding to support the sustainable operations of the Islands Trust Fund. While staff are committed to fully exploring all the options, they are also aware that the name "Islands Trust Fund" was one of the major obstacles to success recognized during the Special Places Campaign. The name change "project" was cancelled by the board in 2006 for several reasons, one of which was the onerous requirements for making legislative changes.

POSSIBLE SOLUTIONS

Revisit the name change project in 2007/2008 and seek Trust Council's sponsorship for a legacy request to the Provincial government and the Federal government that would properly reflect the benefits to all British Columbians and Canadians generated by Trust Fund Board programs. As the Coastal Douglas-fir ecosystem continues to drastically decline, there should be increased political pressure on the province to treat the Trust Area as an emergency conservation zone, and allow the Trust Fund Board to show increased leadership in this area on behalf of all British Columbians, and Canadians.

APPENDIX I: PROPERTY MANAGEMENT ACTION ITEMS TRACKING LIST–TFB OWNED PROPERTIES

ISLAND	ACTION ITEM	STATUS
BOWEN		
Singing Woods Nature Reserve (Cates Hill)	<i>Management Group: Bowen Island Conservancy Bowen Island Parks and Recreation Commission (BIPRC) has a statutory right of way making them responsible for trail creation and maintenance</i>	
	<i>Staff Summary 2006: In 2005 the Board approved a new statutory right of way for this property and trail plan by the Bowen Island Parks Recreation Commission (BIPRC). The BIPRC has had complaints from the neighbours regarding access to this new trail. The BIPRC is willing to work with the neighbours to address this issue but it is not a high priority for them at this time.</i>	
	<i>Management Plan: October 2000</i>	
<i>Short Term (Month 0 to 12)</i>	Action Item 1: ITF will work with the noted interest groups to establish which group will be site managers and which groups will hold the conservation covenant.	done
	Action Item 2: The management group will establish a group (sub-committee or volunteer group) to monitor the site on a regular basis to ensure only acceptable uses are occurring. A management group contact person will be designated to be the initial contact for the site.	done
	Action Item 3: The management group will notify appropriate agencies, particularly RCMP, of the location of the nature reserve and permitted uses. The management group contact person's name and phone number will be provided and the group will work with the agencies to establish procedures to be followed if inappropriate uses are occurring and enforcement assistance is necessary.	done
	Action Item 4: The management group will establish some means to educate the public, particularly the Cates Hill neighbourhood, about the sensitivity of the HNR.	check with Conservancy
	Action Item 5: ITF will arrange for an annual site visit to monitor the condition of the HNR. Monitoring activities will assess and document: <ul style="list-style-type: none"> • Occurrence of inappropriate use. • Condition of the logging road and extent of erosion. • Condition of veteran old-growth Douglas fir trees. • Occurrence of windthrow, particularly in ecotype B – Mixed Forest Wetland (Figure 4). • Regeneration status and successional stage of ecotype F – Clear-cut Shrub/Herb (Figure 4). • Water levels and general condition of pond and watercourses on the property. 	done

ISLAND	ACTION ITEM	STATUS
	Action Item 6: The management group will document, using maps and photos, the extent and location of erosion on the logging road.	done
	Action Item 7: The management group will notify the BIVFD of the location of the Reserve, establish a relationship with the BIVFD, and develop an initial response plan in the event of a fire.	?
<i>Mid to Long-term (Year 1 to 10)</i>	Action Item 8: The management group, in consultation with ITF, will arrange for a professional to develop prescriptions and plans for erosion control which could be implemented by volunteers or appropriately skilled labour as per the professional's best judgment.	
	Action Item 9: The management group will allow natural successional processes to continue, resulting in red alder dominated vegetation.	done
	Action Item 10: The management group will maintain boundary flagging to assist in future monitoring programs.	?
	Action Item 11: The management group will establish and implement a program to remove non-indigenous shrubs, in particular holly, from Ecotype B.	?
	Action Item 12: The management group, along with other interest groups, will determine the best possible location for the trail. BIPRC will maintain trails once constructed.	done
	Action Item 13: The management group will conduct, or organize in consultation with ITF, a bird nesting survey prior to trail construction and associated tree removal. All tree removal should occur outside of the bird-nesting season between April and July.	not done
	Action Item 14: Once a trail has been constructed, signs will be established at strategic locations identifying the site as an ITF nature reserve, permitted uses, and BIPRC as trail managers. The management group will work with BIPRC to determine appropriate locations and design, with ITF standards as a guide.	not done
	Action Item 15: The management group will develop a fire management plan.	not done
	Action Item 16: A hazard tree assessment will be conducted by a certified arborist, in conjunction with any trail development. All hazard trees will be cut and left on site to naturally decompose.	not done
David Otter Nature Reserve	<i>Management Group: none</i>	
	<i>Covenant Holder: Bowen Island Municipality (holds Green Buffer and Natural Park Covenants and Easement)</i>	
	<i>Staff Summary 2007:</i>	
	<i>Management Plan: pending (due sometime in April 2007)</i>	
DENMAN		

ISLAND	ACTION ITEM	STATUS
Inner Island Nature Reserve	<i>Management Group: Denman Conservancy Association</i>	
	<i>Covenant Holder: Nature Conservancy of Canada</i>	
	<i>Staff Summary 2006: There has been no recent activity on this property</i>	
	<i>Management Plan: February 1994 (revised February 2005)</i>	
<i>Management Objectives</i>	<ul style="list-style-type: none"> • minimize interference with natural biological and hydrological processes; 	
	<ul style="list-style-type: none"> • minimize negative effects from surrounding land uses on the beaver pond wetland and adjacent forested areas; and 	
	<ul style="list-style-type: none"> • minimize the effects of human activities within the Inner Island Nature Reserve. 	
<i>Management Strategies</i>	<ul style="list-style-type: none"> • minimize interference with the activities of beaver on the property except where beaver activity threatens the large trees along the edges of the wetland. 	
	<ul style="list-style-type: none"> • ensure that roadways leading into Lot A off Pickles Road remain inaccessible to vehicles 	
	<ul style="list-style-type: none"> • ask surrounding land owners to enter into verbal or written agreements to minimize their impacts on the beaver pond wetlands and adjacent forested areas 	?
	<ul style="list-style-type: none"> • monitor the property to identify any unauthorized use or encroachment or impacts from surrounding lands 	done
	<ul style="list-style-type: none"> • limit recreational use on the property 	?
	<ul style="list-style-type: none"> • consider the provision of a footpath 	?
	<ul style="list-style-type: none"> • monitor the wetland marshes for the appearance of purple loosestrife 	?
	<ul style="list-style-type: none"> • consider removing the holly from the Douglas fir forest 	?
Lindsay-Dickson Nature Reserve	<i>Management Group: Denman Conservancy Association</i>	
	<i>Staff Summary 2006: A Trail plan was approved in 2004. The Board authorized and paid for four signs to be erected. The neighbour impacted a small portion of the border in 2004 resulting in a breach report. The breach was resolved through a conservation with this neighbour. This neighbouring property has since been sold and the new owner has been contacted.</i>	
	<i>Management Plan: April 2002</i>	
<i>Short Term (0 to 12 Months)</i>	Action Item 1: The ITF will move rapidly to reach agreement with the selected management group to undertake the role of local manager of the LDNR.	done
	Action Item 2: A covenant holding agency should be sought as soon as possible. Opportunities for input to the covenant terms should be provided to the management group and the Denman Island community.	not done

ISLAND	ACTION ITEM	STATUS
	<p>Action Item 3: The management group will organize a system for volunteers to report occurrences of unacceptable use. A contact phone number(s) will be publicized for this purpose. Criteria will be established for appropriate actions to be taken in response including, in the extreme, calling on the RCMP.</p> <p>The general public will be made aware, by the management group, of permitted and prohibited uses in local publications from time to time.</p> <p>Permission from the management group will be required for use of the Reserve by any organization proposing larger scale activities or uses which require leaving marked public trails. Criteria for uses requiring permission will be established by the management group in consultation with the ITF and, once approved, will be made available to local organizations such as schools, hiking groups and Resident's Associations.</p> <p>Collection of specimens or creation of permanent marks for studies will also be regulated by ITF and the management group. (see Section 5.2.7 Scientific Research/Education.)</p>	?
	<p>Action Item 4: ITF will establish and carry out an annual site visit to monitor the condition of the LDNR and the implementation of the Management Plan. The management group will provide on-site assistance as required in documenting the conditions as noted below. A set of monitoring locations will be selected from established photo locations as sites for long term monitoring. They will be used to take record photos annually.</p> <p>Monitoring activities should assess and document:</p> <ul style="list-style-type: none"> • condition of rehabilitated areas • condition of public access and trails • changes of land use in adjacent properties that might affect the Reserve • evidence of off-trail use or other unacceptable use by the public • damage to the forest from fire or wind-throw • condition of Douglas fir and red cedar veteran trees • condition of the creek in the northeast part of the Reserve • condition of signage • area of forest without a closed canopy 	done
	<p>Action Item 5: Signs will be installed at the ends of Mallard Way and Jemima Road (see Map 1) giving the name of the reserve, that it is owned by ITF and managed by the management group, and indicating what uses are permitted. Sign wording will be agreed on by the ITF and the management group. Once the Board has approved the design, a contract will be let for the preparation and installation of the permanent signs.</p> <ul style="list-style-type: none"> • Existing 'No Hunting' signs will be maintained at appropriate locations on the perimeter. 	done

ISLAND	ACTION ITEM	STATUS
	<p>Action Item 6: Skid roads affected by recent logging will be mostly left to regenerate naturally. Advice from a professional biologist experienced in forest restoration may be required to determine the best treatment for the areas damaged by the recent logging activity. With ITF approval, a contract may be let for a small earth-moving machine, such as a backhoe/front-end-loader, to fill in the ruts and restore grades on the heavily worn section of skidder road and the log landing area.</p>	done
	<p>Action Item 7: The management group will prepare a trail plan that will include an estimate of costs for any required materials and signs. The trail plan will be submitted for the approval of the ITF.</p>	done
	<p>Action Item 8: The management group will prepare a fire management plan in consultation with the Denman Island Volunteer Fire Department.</p>	?
<p><i>Mid to Long-term (Year 1 to 10)</i></p>	<p>Action Item 9: Skid roads and areas affected by recent logging will be mostly left to regenerate naturally. ITF may consider plantings of native vegetation if necessary. Once the walking trail route has been selected, and in conjunction with creation of the trail, old skid roads, which are not to be used, will be blocked off with available slash and natural debris to discourage their use. If necessary short term signage may be employed to seek visitors' cooperation in allowing natural regeneration to occur.</p>	done
	<p>Action Item 10: All owners of adjacent land, including those separated from the Reserve by an undeveloped road allowance will be approached by the management group to seek their assistance in maintaining conservation values in the Reserve.</p> <p>Agreement on the following will be sought:</p> <ul style="list-style-type: none"> • Access to the Reserve lands will be permitted as identified in this Plan. • Landowners who wish to run livestock on their properties will be asked to maintain adequate fencing to keep their stock out of the Reserve. • Covenants will be sought to create a Buffer Zone on neighbouring properties to maintain a forested buffer and to protect the quality and quantity of water flowing to the Reserve. • The owner of the Lindsay-Dickson homestead parcel will be approached regarding a possible boundary adjustment to bring into the Reserve the creek area at the south side of the homestead property in exchange for the former farm fields now in the Reserve to the west of his property. 	done
	<p>Action Item 11: The management group will consult with a professional ecologist botanist or biologist and organize a volunteer effort to remove non-indigenous vegetation and materials. Trapping and removal of non-indigenous wildlife, if needed, will be done by volunteers under the supervision of a biologist.</p>	?

ISLAND	ACTION ITEM	STATUS
	<p>Action Item 12: Preparation of the trails, according to the plan approved by the ITF will be done by volunteers under the supervision of the management group. A contract will be let for the preparation and installation of permanent information signs at trail entrances, once the Board has approved a design.</p> <ul style="list-style-type: none"> • A Nature Interpretation Trail may be considered after experience has been gained with the public use of the walking trail and if demand for such a facility is apparent. 	done
	<p>Action Item 13: Signage as described in section 5.1 will be maintained. With the opening of the walking trail, sign boards at the main trail entrance(s) will be installed providing a map as well as the name of the Reserve, that it is owned by ITF and who manages it, and indicating what uses are permitted. Sign wording and graphics will be agreed on by the ITF and the management group. Once the Board has approved the design, a contract will be let for the preparation and installation of the permanent sign(s).</p>	done
	<p>Action Item 14: The general public will be made aware of the natural values of the site and permitted and prohibited uses in local publications from time to time by the management group. Advertising of the site will not be undertaken. It should not be promoted as an attraction. No major sign will identify the Reserve to motorists passing through it on East Road.</p>	?
	<p>Action Item 15: The management group, in consultation with the ITF, will establish a Science Committee to regulate, co-ordinate and monitor research studies on the LDNR on an as-needed basis, to ensure that the studies conform to the policies of the ITF and the Management Plan. A copy of reports and findings resulting from any study conducted on LDNR will be provided to the ITF. The Science Committee may promote opportunities to conduct scientific research on LDNR along with research on other Denman Island properties that Denman Conservancy Association manages.</p>	not done
	<p>Action Item 16: The following activities as described in section 5.1 will be continued:</p> <ul style="list-style-type: none"> • Monitoring • Controlling unacceptable use • Fire Management 	done except for fire management
Morrison Marsh Nature Reserve	<i>Management Group: none</i>	
	<i>Covenant Holder: Denman Conservancy Association</i>	
	<i>Staff Summary 2007: none</i>	
	<i>Management Plan: April 2007</i>	
<i>Immediate (Month 0 to 12)</i>	<p>Action Item 1: Erect signage at access points off of Greenhill Road, East Road, Boyle Point Provincial Park and the Crown land parcel to the east (boundary between photo points 4 and 5, photo point 24, photo point 30 and photo point 8) to indicate where the nature reserve</p>	

ISLAND	ACTION ITEM	STATUS
	boundary begins and list permitted uses.	
	Action Item 2: Re-route the trail entering Boyle Point Provincial Park along the southern boundary of the reserve to by-pass the wetland (photo point 8) and resume its original path as intended.	
	Action Item 3: Unplug the culvert across Boyle Creek to allow for safe water passage.	
	Action Item 4: Contact the landowner to the north of the reserve to initiate discussions regarding the exclusion of cattle from reserve lands in the northeastern corner.	
	Action Item 5: Erect signage at the trail to the bluff indicating that a safety hazard exists and that use of the trail and the risk associated is assumed by the user of the trail and not by the Islands Trust Fund until more permanent safety precautions can be taken, such as the relocation of the trail.	
<i>Short Term (Year 1 to 2)</i>	Action Item 6: Close all secondary trails as discussed in Section 5.1 through use of barriers or signage.	
	Action Item 7: Examine possible routes to relocate the southern main trail to within the boundaries of the nature reserve and establish permanent entrance trail.	
	Action Item 8: Install a water bar between photo points 13 and 14 to assist in controlling erosion and run off damage to the trail system in this location.	
	Action Item 9: Examine the possible relocation of the bluff trail (photo points 29 and 30) to distance it from the edge to increase safety in this location and re-establish the trail within a safe distance from the bluff.	
	Action Item 10: Examine potential barrier methods to exclude use of mountain bikes and motorized vehicles within reserve boundaries if this issue persists despite signage and install barriers where required.	
	Action Item 11: Begin a removal strategy for invasive plants, such as English holly, Scotch broom and Laurel-leaved daphne.	
	Action Item 12: Fill holes left from cultivation of domestic crops along the shorelines of Morrison Marsh and other small wetland systems within reserve boundaries.	
	Action Item 13: Conduct a summer inventory of the flora of the Morrison Marsh Nature Reserve to identify potential additional rare or threatened species and invasive species. The results of this inventory may determine additional actions items within this plan.	
<i>Mid Term (Year 3 to 5)</i>	Action Item 14: Erect signage on the shoreline of Morrison Marsh to indicate to water craft users that mooring or docking of boats within the reserve is strictly prohibited as is the use of the reserve for this activity.	
	Action Item 15: Provide educational materials and/or signage indicating the breeding season of area waterfowl and the sensitivity to disturbance between the months of April to June.	

ISLAND	ACTION ITEM	STATUS
	Action Item 16: Begin a removal strategy for invasive plants, such as Canada thistle, common tansy and oxeye daisy.	
<i>Long Term (Year 6 to 10)</i>	Action Item 17: Seek a removal strategy for reed canarygrass once methods for its removal are better understood.	
	Action Item 18: Seek long term additional capacity to ensure long term management of the Morrison Marsh Nature Reserve and surrounding environments.	
	Action Item 19: Continue to work with adjacent landowners on private land stewardship initiatives and resume discussions in regards to the long term protection of shoreline along Morrison Marsh and the wetland partially contained on the private property to the south.	
	Action Item 20: Cooperate with landowners, local government and Ducks Unlimited Canada in addressing issues in reference to water levels and the potential degradation of water quality from area septic systems.	
GABRIOLA		
Coats Millstone Nature Reserve	<i>Management Group: none</i>	
	<i>Covenant Holders: Nanaimo Area Land Trust and the Gabriola Historical Society</i>	
	<i>Staff Summary 2006: The Gabriola Conservancy Society withdrew from management of this property in 2004. The trail in the property was closed in 2004 due to hazardous conditions which continue to be a problem. In 2006 an all parties meeting was held and action items were identified.</i>	
	<i>Management Plan: February 1994 (revised September 1997)</i>	
<i>Management Objectives</i>	<ul style="list-style-type: none"> • protection of a historic site of community value; 	
	<ul style="list-style-type: none"> • protection of the natural features of the site; 	
	<ul style="list-style-type: none"> • minimizing negative effects from surrounding land uses on the site; and 	
	<ul style="list-style-type: none"> • allowing natural ecological processes to continue. 	
<i>Management Strategies</i>	<ul style="list-style-type: none"> • if resources permit work with Gabriola Island Museum or other local group re: potential for interpretation of the site's historic significance on-site and/or at the Gabriola museum; 	
	<ul style="list-style-type: none"> • maintain signage informing public that site is closed due to safety concerns 	done
	<ul style="list-style-type: none"> • discourage access from adjacent properties 	not done
	<ul style="list-style-type: none"> • discourage activities that present a fire or safety risk; and • monitor the property to identify any unauthorized use, or encroachment from surrounding 	done

ISLAND	ACTION ITEM	STATUS
	lands.	
Former UREP	<i>Management Group: none</i>	
	<i>Covenant Holders: none</i>	
	<i>Staff Summary 2007:</i>	
	<i>Management Plan: April 2007</i>	
<i>Immediate (Month 0 to 12)</i>	Action Item 1: Seek long term additional capacity and funding to ensure management recommendations for the _____ Nature Reserve and surrounding environments can be implemented. This could be in the form of a 'Friends of Nature Reserve' initiated by the Islands Trust Fund.	
	Action Item 2: Erect signage at access points off of North Road, Windecker Road, and federal land holdings to the north and west of the reserve (photo points 1, 20, 28, 30 and 34) indicating permitted uses and in the case of federal lands, that users are entering private property. Five signs are required in total and should indicate that users are entering a nature reserve and show symbols for permitted uses within the reserve, as well as the Islands Trust Fund logo and a contact number to report any safety hazards or other concerns.	
	Action Item 3: Remove yard wastes found along the most westerly entrance off of North Road and close trail using signage and/or obstacles.	
	Action Item 4: Remove mountain bike improvements throughout the reserve.	
	Action Item 5: Request that the _____ Nature Reserve be removed from local tourist literature to reduce traffic and associated damage to trail system and natural integrity of the _____ Nature Reserve.	
<i>Short Term (Year 1 to 2)</i>	Action Item 6: Close all trails as discussed in Section 5.1 through use of barriers or signage.	
	Action Item 7: Examine possible routes to relocate the main loop trail away from Stoney Creek at photo point 18 with respect to adjacent wetland.	
	Action Item 8: Construct stream crossings over Stoney Creek at photo points 3 and 13.	
	Action Item 9: Examine potential barrier methods to exclude use of mountain bikes and motorized vehicles within reserve boundaries if this issue persists despite signage.	
	Action Item 10: Begin a removal strategy for invasive plants, such as English holly, Scotch broom and English ivy.	
	Action Item 11: Conduct a summer inventory of the flora of the _____ Nature Reserve to identify potential additional rare or threatened species and invasive species, the results of this inventory may determine additional actions items within this plan.	

ISLAND	ACTION ITEM	STATUS
<p><i>Mid Term (Year 3 to 5)</i></p>	<p>Action Item 12: Erect signage along the trail to indicate the vulnerability of veteran trees to damage from recreational traffic or/and explore options to block access to trees to protect them from further damage.</p>	
	<p>Action Item 13: Explore options to obtain funding for the construction of a boardwalk in areas where the trail system passes over seasonally wet or persistently wet areas. This includes that area found between photo points 14 and 16 and 34 and 36.</p>	
<p><i>Long Term (Year 6 to 10)</i></p>	<p>Action Item 14: Seek a removal strategy for reed canarygrass once methods for its removal are better understood.</p>	
<p>GALIANO</p>		
<p>Trincomali Nature Sanctuary</p>	<p><i>Voluntary Warden: Derek and Molly Astbury</i></p>	
	<p><i>Management Group: Wild Bird Trust</i></p>	
	<p><i>Co-Covenant Holders: TLC and HAT</i></p>	
	<p><i>Staff Update 2006: In 2005 the management group attempted to organize a group for broom removal. Due to circumstances beyond the groups control this removal did not happen. The WBT will try again in 2006.</i></p>	
	<p><i>Management Plan: January 2002 (revised September 2002)</i></p>	
<p><i>General</i></p>	<p>General management direction is to allow natural processes to continue throughout the nature sanctuary with the exception of replanting in the logged area (as per section 4.2.2.2), planting of indigenous shrubs to block access at certain locations (as per section 4.2.3.2), and the removal of any non-indigenous species (as per section 4.2.3.4).</p>	
	<p>The ITF will establish a communication process with both the Sanctuary Warden and the Management Group in the event that the Warden or Management Group observe human-caused disturbances to the seabirds and/or falcons and any inappropriate use of the sanctuary. Should the Sanctuary Warden or Management Group notice anything that causes concern, they are to inform the other parties immediately.</p>	
<p><i>Short Term (Month 0 to 12)</i></p>	<p>Action Item 1: Based on past observations by the Sanctuary Warden, “touch and go” maneuvers by aircraft, of a particular airline, have caused disturbance to the seabirds. The Management Group will take a proactive response to this potential problem by contacting the airline to learn more about the nature of their actions and to inform them of the sensitivity of this site.</p>	<p>done</p>

ISLAND	ACTION ITEM	STATUS
	<p>Action Item 2: In the event that the Sanctuary Warden or Management Group observe human-caused disturbances to the birds, the following specific actions may be taken:</p> <p>1) When on-foot human disturbance is observed, the Sanctuary Warden will speak directly with the offenders to advise that they are disturbing birds and that they are in a prohibited area. If necessary, the warden will contact the RCMP for assistance.</p> <p>2) When dealing with boats or aircraft, attempt will be made to obtain an identification number. The owners will be contacted via phone with a follow-up letter, written by the Management Group, indicating that the boat or aircraft operators' actions caused disturbance to the birds and requesting to avoid the area in the future.</p> <p>3) The Sanctuary Warden is to contact the Management Group or ITF if major concerns arise.</p>	done
	<p>Action Item 3: The Management Group, in consultation with ITF, will ensure that the placement and content of the educational signs at Montague Harbour is appropriate. These signs should communicate both the importance of seabird populations and their sensitivity to disturbance.</p>	not done
	<p>Action Item 4: The Management Group will allow natural successional processes to continue. Some replanting may be permitted with approval of ITF, the Management Group and Covenant Holders and if such activities are in accordance with the purpose and objectives outlined in Sections 1.1 and 1.2 and the Conservation Covenant on the property and in areas identified on Figure 6.</p>	not done
	<p>Action Item 5: The Management Group will remove or disperse the slash piles remaining from logging activity.</p>	not done
	<p>Action Item 6: Within the first 2-2.5 years, the Management Group will plant a native berry-producing shrub at the junction of the spur road and the logging road as well as at the chain gate off of Porlier Pass Road (see Figure 6).</p>	not done
	<p>Action Item 7: Inappropriate activities in the sanctuary include overnight use and campfires. Public use of any kind (other than monitoring and implementing management plan strategies) within the coastal bluff/woodland area is prohibited. Should the Sanctuary Wardens observe such uses, they will inform the offenders of the allowable activities. If further problems arise, they will contact the RCMP as necessary.</p>	done
	<p>Action Item 8: New signs identifying the 4 project partners and the sensitive nature of the area will be created and placed at the base of the bluffs on either side. One of the signs should replace the existing sign in its current location. The other should be placed 50m from the western boundary of the bluff (with the adjacent landowner's permission) (See Figure 6).</p>	not done
	<p>Action Item 9: The Sanctuary Warden or Management Group will place no trespassing signs at the junction of spur and loop road; at the diverted access route alongside Lot #3; and at the chain gate off Porlier Pass Road.</p>	not done

ISLAND	ACTION ITEM	STATUS
	Action Item 10: ITF will arrange for an annual site visit to monitor the condition of the TNS. Monitoring activities will assess and document: Indications of public use; <ul style="list-style-type: none"> • Status of bird species of concern (number of nests/individuals); • Condition of the former logging road and extent of regeneration throughout the logged portion; • Non-native species invasion; • Condition of the older second growth ecosystem and coastal bluff/woodland ecosystem; • Condition of natural spring and health of associated vegetation. 	not done
	Action Item 11: The Management Group will notify the GIVFD of the location of the sanctuary and suggest that in the event of a fire, access along the former logging road is preferred.	not done
	Action Item 12: Within the first two years the Management Group will remove the Scotch Broom from the top of the cliff and Blackberry beside the chain gate. The Management Group will continue to monitor and remove (with the help of volunteers) any new growth of non-indigenous Scotch Broom and Himalayan Blackberry within the sanctuary.	not done
<i>Mid to Long Term (Year 2 to 10)</i>	Action Item 13: The ITF will work to establish Memoranda of Understanding with the Ministry of Water, Land and Air Protection, the Ministry of Agriculture, Fisheries and Food and Fisheries and Oceans Canada to set out commitments of each group toward the protection of the seabird habitat (as per Section IV. 2h.iv. of the Galiano Island Official Community Plan).	not done
	Action Item 14: The ITF will request the Local Trust Committee to change the designation and zoning of the property from Forest to Natural Protection at the time of the next OCP and Land Use By-law are being comprehensively amended.	done
	Action Item 15: The ITF will submit a request to the Local Trust Committee to have a marine protection zone extending from the bluffs to a distance of at least 100 m offshore of the sanctuary when the Land Use Bylaw is being comprehensively amended.	done
GAMBIER		
Brigade Bay Bluffs and Long Bay Wetlands Nature Reserves	<i>Management Group: none</i>	
	<i>Staff Report 2006: Nothing has been done on this property as the management plan was only approved in January 2006</i>	
	<i>Management Plan: November 2005 (approved January 2006)</i>	
<i>Immediate (Month 0 to 12)</i>	Action Item 19: Solicit expressions of interest by individuals and/or existing non-profit stewardship groups for the management of the Long Bay Wetland Nature Reserve.	done

ISLAND	ACTION ITEM	STATUS
	Action Item 3: Restore denuded area (borrow pit) adjacent to the road using native plant and seed stock.	not done
	Action Item 20: Develop a set of operating guidelines and principles for the stewardship group.	not done
<i>Short Term (Year 1 to 2)</i>	Action Item 1: Develop a signage plan to clearly delineate Islands Trust Fund Property and to provide education information regarding preservation and environmental protection efforts.	not done
	Action Item 11: Address issues regarding liability and safety by integrating this information with the signage/interpretative program as appropriate.	not done
	Action Item 12: To mitigate liability and risk to public safety adequate signage should be installed at key access points to inform the public of safe practices (i.e., staying on designated trails) when entering the reserve.	not done
	Action Item 13: Develop a fire protection plan in consultation with the Gambier Fire Protection Group.	not done
	Action Item 14: Include permanent fire ban information within the signage program.	not done
	Action Item 16: Include "No Hunting" information in the signage program around the perimeter of the Long Bay Wetland Nature Reserve.	not done
	Action Item 2: Develop a landowner contact program for new lot owners of the Brigade Bay Subdivision.	not done
	Action Item 5: Develop mapping for integration with signage program and place at key strategic locations. These include public facilities (i.e. docks) at New Brighton, Long Bay and Brigade Bay.	not done
	Action Item 6: Clearly articulate existing trails in all mapping and signage programs.	not done
	Action Item 22: In consultation with the stewardship group, develop a viable monitoring program to measure ecosystem health within the Long Bay Wetland Nature Reserve. Key measurement tools should be quantitative in nature and should include photo point records, wildlife sightings, vegetation surveys, and water quality monitoring.	not done
	Action Item 23: Install signs at key points around the periphery of the property and at public staging areas. Refer to Action Items 1, 5, 6, 11, 12, 14 and 16 above for information to include within the signage program.	not done
	Action Item 24: Develop an interpretive program for education of youth and general public.	not done
<i>Medium Term (Year 3 to 5)</i>	Action Item 10: Construct and maintain a loop trail that provides nature viewing and wetland interpretive opportunities for visitors to the Long Bay Wetland Nature Reserve.	not done
	Action Item 15: Inspect the reserve area on a regular basis (every 2 to 5 years) for the presence of invasive plants and remove as necessary using mechanical or biological means.	not done

ISLAND	ACTION ITEM	STATUS
	Action Item 17: Encourage students, academic institutions, and/or naturalist clubs to conduct rare or endangered species surveys within the reserve.	not done
	Action Item 18: As detailed in Action Item 8, construct and maintain a loop trail that provides nature viewing and wetland interpretive opportunities for visitors to the Long Bay Wetland Nature Reserve while avoiding adverse environmental impacts. Utilize appropriate trail construction techniques in sensitive areas (i.e. boardwalks).	not done
	Action Item 7: Develop an alternative trailhead for Mt. Artaban trail that avoids trespass on private property.	not done
	Action Item 8: In consultation with the Sea Ranch Strata Council, develop an interpretive trail system that takes advantage of existing trails and focuses on the educational and recreational opportunities of the Long Bay Wetland Nature Reserve.	not done
	Action Item 9: Include Squamish Nation in correspondence relating to the Long Bay Wetland Nature Reserve and continue to solicit input regarding the management of the site.	not done
	Action Item 21: Explore with the local management / stewardship group the need for placing a conservation covenant on title.	not done
<i>Long Term (Year 6 to 10)</i>	Action Item 4: Investigate the potential of expanding the Long Bay Wetland Nature Reserve onto the Crown land to the south. With the Halkett Provincial Park in close proximity, it may be possible to acquire the intervening lands as nature reserve, thus creating a larger, more contiguous, ecological unit.	not done
	Action Item 25: Working with the youth camps and academic institutions exploit educational opportunities as afforded by the wetlands.	not done
LASQUETI		
Kwel Nature Sanctuary	<i>Management Group: none</i>	
	<i>Covenant Holders: TLC and NALT</i>	
	<i>Staff Report 2006: No recent action has been taken on this property</i>	
	<i>Management Plan: January 1999 (revised February 2002)</i>	
<i>Short-Term (Year 0 to 4)</i>	Action Item 1: design and install a sign	not done
	Action Item 2: initiate a regular program of monitoring	done
<i>Medium Term (Year 5 to 10)</i>	Action Item 3: Undertake research, as appropriate, toward developing a long term action plan relating to regeneration of special species(yew, western red cedar)	not done
<i>Long Term (Year 10 to 25)</i>	Action Item 4: Develop strategies for impact management from feral sheep, as necessary.	not done
Mount Trematon	<i>Management Group: none</i>	

ISLAND	ACTION ITEM	STATUS
	<i>Covenant Holders: none</i>	
	<i>Staff Report 2007:</i>	
	<i>Management Plan: pending (April 2007)</i>	
MAYNE		
Horton Bayviary Nature Reserve	<i>Voluntary Warden: Adjacent Landowner - Toby Snelgrove</i>	
	<i>Staff Report 2006: In 2004 it was noted that the adjacent landowner (Twin Totems) was dumping lawn clippings on our property. The Board worked with the landowner to have the issue resolved. The Board approved the Mayne Conservancy in January 2006 as managers of this property. A management agreement is currently being drafted.</i>	
	<i>Management Plan: September 2002</i>	
<i>Short Term (Month 0 to 24)</i>	Action Item 1: The ITF will try to establish a Management Group or volunteer warden(s) for the site.	done
	Action Item 2: The ITF will establish a communication process with the Management Group, or volunteer warden(s), in the event that the human-caused disturbances and any inappropriate use of the Nature Reserve are observed.	done
	Action Item 3: Request the CDC, or other qualified individuals, to conduct a site assessment for potential rare plant and animal species in the Nature Reserve including the marine intertidal region.	not done
	Action Item 4: Remove any refuse or garbage from the site and post "No Dumping" signs along the edge of the Nature Reserve.	not done
	Action Item 5: Mark the percolation holes by either posting "Caution - Keep Back" signs or bright tape near the holes to increase awareness of the holes.	not done
	Action Item 6: Secure a rope "handle" from tree to tree as a support mechanism to increase accessibility to the beach.	not done
<i>Mid to Long Term (Year 2 to 10)</i>	Action Item 7: Removal of any non-indigenous vegetation that may appear on the site.	not done
	Action Item 8: Review the need for access and trail clearings.	not done
	Action Item 9: When OCP and/or Land Use Bylaws are being comprehensively reviewed, request a change in designation and zone to ones appropriate to protected areas.	done
NORTH PENDER		
Medicine Beach Nature Sanctuary	<i>Management Group: Pender Island Conservancy Association</i>	
	<i>Covenant Holders: NCC and HAT</i>	

ISLAND	ACTION ITEM	STATUS
	<p><i>Staff Report 2006: An evaluation of the health of the wetland was contracted by TFB in 2005. The trail up to the bluffs was revitalized to ensure safety in 2004.</i></p>	
	<p><i>Management Plan: November 1997 (revised January 2006)</i></p>	
<p><i>Short Term (Month 0 to 24)</i></p>	<p>Action Item 1: The management group should organize volunteers to report occurrences of unacceptable use. One or more contact phone numbers will be publicized for this purpose. Criteria will be established for appropriate actions to be taken in response including, in the extreme, calling on the RCMP.</p>	<p>done</p>
	<p>Action Item 2: The management group should organize volunteers to remove the remaining Scotch broom, Spurge-laurel, thistle and orchard grass from the Sanctuary. A plan should be developed to discourage European starling from nesting in the area.</p>	<p>done</p>
	<p>Action Item 3: The management group should maintain the newly developed trail and advise the ITF of any future need for its maintenance.</p>	<p>done</p>
	<p>Action Item 4: The management group should prepare a fire management plan in consultation with the Pender Island Volunteer Fire Department.</p>	<p>?</p>
	<p>Action Item 5: The management group should establish signage on the upland portion of the property to indicate the Sanctuary's boundary.</p>	<p>not done</p>
	<p>Action Item 6: The management group should follow up with the North Pender Local Trust Committee as to the status of the rezoning of the foreshore.</p>	<p>not done</p>
	<p>Action Item 7: The ITF, in cooperation with the management group and the covenant holder, should send out a letter to those companies that use Bedwell Harbour Road and the foreshore of the Sanctuary to transport houses. A copy of all correspondence should also be sent to the Ministry of Highways.</p>	<p>not done</p>
<p><i>Mid to Long Term (Year 2 to 10)</i></p>	<p>Action Item 8: The management group should continue to monitor the number of tourists that use the Nature Sanctuary and report back to the Board on significant increases. Consideration may need to be given in the future to adding the Nature Sanctuary to the Gulf Islands National Park, if the public, the management group, the Board, and the covenant holders feel that this step may be necessary due to increased use.</p>	<p>not done</p>
	<p>Action Item 9 The general public should be made aware of the natural values of the site and the permitted and prohibited uses through information placed in local publications from time to time by the management group. Advertising of the site will not be undertaken. It should not be promoted as an attraction. No major sign will identify the Nature Sanctuary to motorists passing through the area on Schooner Way or Aldridge Road.</p>	<p>done</p>

ISLAND	ACTION ITEM	STATUS
	Action Item 10: An inventory of small mammals, amphibians, reptiles, and invertebrates should be undertaken for the Nature Sanctuary.	not done
SALT SPRING		
C. Cunningham Nature Reserve	<i>Management Group: SSI Parks and Recreation</i>	
	<i>Staff Report 2006: no recent activity has occurred on this property</i>	
	<i>Management Plan: March 1995 (revised November 2004)</i>	
<i>Management Objectives</i>	<ul style="list-style-type: none"> • minimize risk of fire; • protect sensitive areas and native vegetation; • protect the natural and scenic values of the site; • allow natural ecological processes to continue; and • maintain the reserve as a buffer to the adjacent ecological reserve. 	
<i>Management Strategies</i>	<ul style="list-style-type: none"> • discourage activities that present a fire risk 	not done
	<ul style="list-style-type: none"> • remove invasive non-native vegetation; 	not done
	<ul style="list-style-type: none"> • monitor property annually to identify use of, or damage to, the site; and 	done
	<ul style="list-style-type: none"> • monitor adjacent covenanted lands for compliance with covenant restrictions. 	done
Deep Ridge Nature Reserve	<i>Management Group: none</i>	
	<i>Staff Report 2006: an outstanding issue regarding the neighbours well head which is within the TFB property still exists. Expansion of the Reserve is being proposed by the developer</i>	
	<i>Management Plan: February 1994 (revised November 2004)</i>	
<i>Management Objectives</i>	<ul style="list-style-type: none"> • conserve viewsapes and vegetation; • allow natural ecological processes to continue; and • maintain a buffer for Peter Arnell Park. 	
<i>Management Strategies</i>	<ul style="list-style-type: none"> • discourage the creation of trails and access points 	not done
	<ul style="list-style-type: none"> • discourage activities that present a fire risk 	not done
	<ul style="list-style-type: none"> • minimize interference with natural biological and hydrological processes. 	done
Lower Mt. Erskine Nature Reserve	<i>Management Group: SSI Trail and Nature Club</i>	
	<i>Covenant Holders: NCC and HAT</i>	

ISLAND	ACTION ITEM	STATUS
	<i>Staff Report 2006: Outstanding issues over the improper use of this reserve by mountain bikers continues to be a problem.</i>	
	<i>Management Plan: February 1994 (revised January 2005)</i>	
<i>Management Objectives</i>	<ul style="list-style-type: none"> • protect the natural features and vegetation of the Reserve; 	
	<ul style="list-style-type: none"> • provide a link in an important recreational trail network; 	
	<ul style="list-style-type: none"> • discourage uses that are incompatible with the goals of the reserve; 	
	<ul style="list-style-type: none"> • allow natural biological processes to continue; and 	
	<ul style="list-style-type: none"> • ensure recreational uses are consistent with protection of natural values of the site 	
<i>Management Strategies</i>	<ul style="list-style-type: none"> • monitor trail conditions and implement a trail maintenance program; 	not done
	<ul style="list-style-type: none"> • develop a strategy to remove invasive/exotic plant species; 	not done
	<ul style="list-style-type: none"> • monitor the property to identify any unauthorized use that is inconsistent with management objectives and develop and strategy to limit this type of use, 	not done
	<ul style="list-style-type: none"> • monitor the property to identify encroachment or impacts from surrounding lands; 	done
	<ul style="list-style-type: none"> • erect and maintain signage encouraging visitors to stay on established trails; 	not done
	<ul style="list-style-type: none"> • erect and maintain signage informing visitors of need to protect natural values of the site and the danger that fire poses to the area; and, 	not done
	<ul style="list-style-type: none"> • review management and maintenance needs regularly. 	done
Ruby Alton Nature Reserve	<i>On-Site Caretakers/tenants: vacant as of Nov 2006</i>	
	<i>Staff Report 2006: Most of the action items in this management plan have been completed. No management group has been found for this property therefore most of the work was carried out through rental income and staff time. A new management plan should be created in the near future.</i>	
	<i>Management Plan: November 2002</i>	
<i>Immediate (Month 0 to 12)</i>	Action Item 1: The Islands Trust Fund will develop a Terms of Reference for the Management Group for the RANR.	done
	Action Item 2: The Trust Fund Board and its staff will meet with the Salt Spring Island Conservancy Board and its staff to discuss the possibility of SSIC acting as the Management Group for the short term (1-2 years).	done
	Action Item 3: The Islands Trust Fund and the Management Group will work together immediately to ensure adequate measures are taken to identify and/or remove on-site safety	done

ISLAND	ACTION ITEM	STATUS
	concerns, as identified in Section 7.1.2.	
	Action Item 4: ITF and the Management Group will undertake, as soon as possible, those items identified as "Immediate Maintenance" in Section 7.1.	done
	Action Item 5: ITF will seek professional legal advice regarding its abilities and responsibilities relating to leasing or renting the house for a live-in Caretaker/Manager and will assess the financial viability of having such a Caretaker/Manager.	done
	Action Item 6: The Management Group, in conjunction with Islands Trust Fund, will develop a general "Caretaker Job Description" and prepare a more detailed Five Year Terms of Reference for Management Responsibilities at the Ruby Alton Nature Reserve and, will subsequently, seek out interested individuals in the community for consideration.	done
	Action Item 7: Based on a candidate assessment, the job description and Terms of Reference and personal references, the Management Group will recommend a caretaker and the Islands Trust Fund will undertake the legal requirements to contract the live-in Caretaker/Manager.	done
	Action Item 8: The ITF, or Management Group, will organize immediate removal of the old oil tank and purchase and installation of a new oil tank outside the house. In addition, annual maintenance will be contracted for the furnace (including filter cleaning or replacement).	done
	Action Item 9: As a second heating option, subject to available funds, the installation of a wood heating device, either as a stand alone airtight wood stove installed in the dining area, an insert into the living room fireplace, or a small wood stove in the kitchen should be considered. The later option would involve repairing the chimney in the kitchen. This action may be moved to the short or long term actions if funds are not available.	done
<i>Short Term (Year 1 to 2)</i>	Action Item 10: Islands Trust Fund will follow up with the Waldorf School Society and the Gulf Islands Centre for Ecological Studies to determine their interest in a possible partnership at the RANR.	done
	Action Item 11: ITF and the Management Group will establish who will take the lead in contracting the additional repairs to the house.	done
	Action Item 12: The Management Group, in consultation with the Islands Trust Fund, should have the water system shocked with chlorine and flushed and appropriate water quality testing should be undertaken by an appropriately qualified individual.	not done
	Action Item 13: Based on water quality test results the Trust Fund Board and Management Group will discuss the most practical course of action (identify water as unfit and require use of bottled water only, install a coarse filter, install a UV filter) and design a necessary action plan.	done

ISLAND	ACTION ITEM	STATUS
	Action Item 14: The ITF will consult with the Nature Conservancy of Canada regarding the possibility of future work on its property to improve the water supply to the water reservoir on the RANR. If NCC is open to such work, and based on the decision regarding a course of action regarding water quality, water quantity issues should be addressed further by the Islands Trust Fund and Management Group.	done
	Action Item 15: The Management Group will support garden clean-ups and will seek assistance in organizing a weeding, garden assessment, and first year priorities plan.	done
	Action Item 16: The Management Group will organize volunteer work parties for the removal of invasive species on-site.	done
	Action Item 17: The Management Group will organize work parties for garbage removal from the domestic dump site south of the creek.	not done
	Action Item 18: The ITF will take steps to place a conservation covenant over the forested section of this property or all of the property, as appropriate.	not done
	Action Item 19: The Management Group and the Islands Trust Fund will work together to design a RANR sign for the gate and necessary caution signs for areas of concern on site. Upon agreement of the design, the Management Group should have the signs created on-island out of natural materials and install the signs.	done
	Action Item 20: The Management Group will maintain contact with Ms Braden regarding her potential use of the sheep pasture.	done
	Action Item 21: The Management Group, working with the caretaker/manager, will establish and sign a public pedestrian path through the pasture. Later, the path from the beach to the garden will be improved for public use and a seating area will be established for day-time public use (ensuring adequate privacy for the caretaker/manager is maintained) to create a loop trail opportunity.	done
<i>Long Term (Year 3 to 25)</i>	Action Item 22: The Management Group will work with the Garden Club and other horticultural professionals to develop a garden plan for the next 5 years. The Plan should be approved by the ITF Board.	not done
	Action Item 23: The Management Group will work with the Garden Club, over time, to organize volunteer opportunities and garden restoration projects.	not done
	Action Item 24: The Trust Fund Board and the Management Group will discuss long term options for use of the house in more detail, including the associated costs of all options and the community benefits that would accrue.	not done